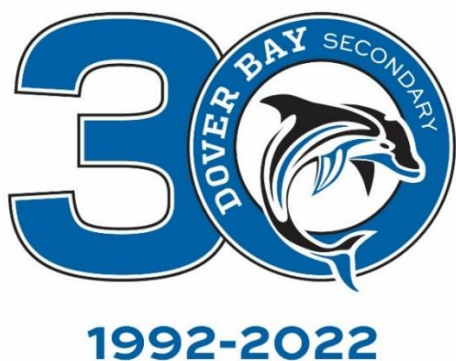


Dover Bay Secondary: Our 2022-2023 School Story



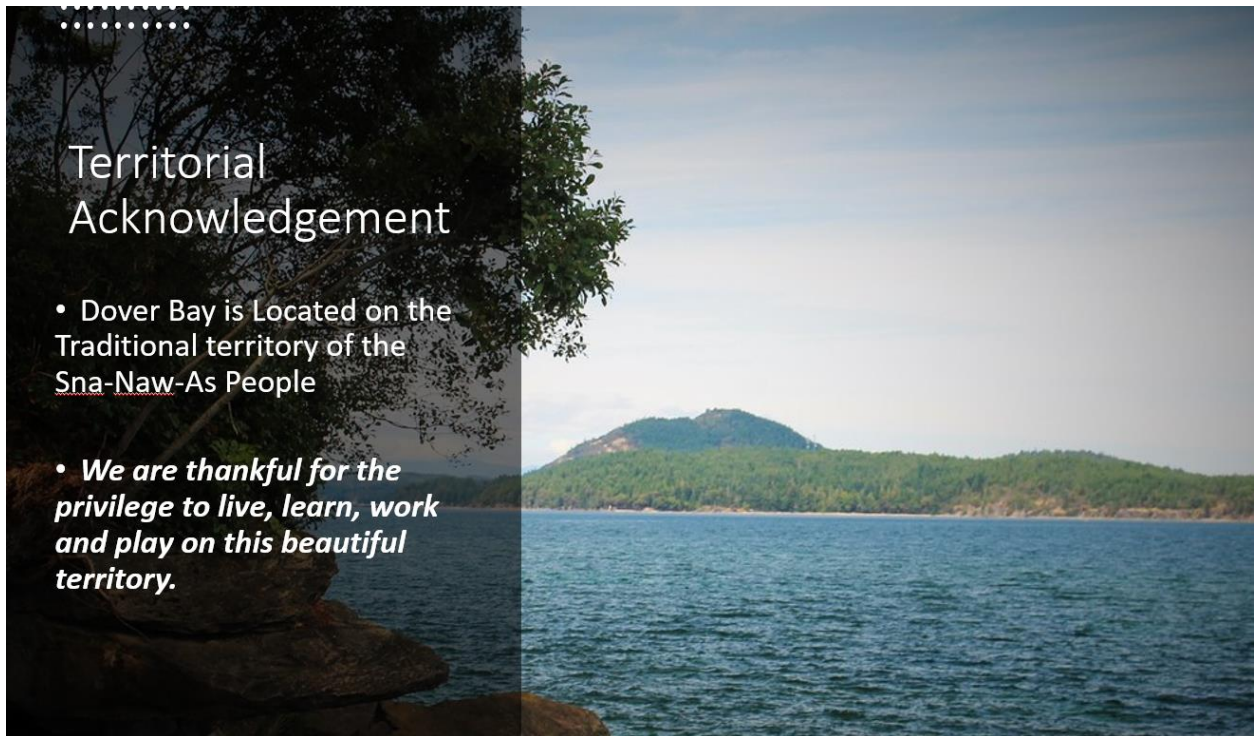
September 2022

INTRODUCTION

Good day Dover Bay Friends, Families and Alumni and welcome to our new 2022/2023 school year! This year celebrates the **30th Anniversary of Dover Bay Secondary** and we are looking forward to another great year. Dover Bay opened its doors in September of 1992 and has been providing quality educational experiences for students in Nanaimo's north end for three decades. As Nanaimo has grown and continued to change so has Dover Bay. Our school is much more culturally diverse than it was in 1992 and mirrors the changes in our wider community. Our school is currently undergoing construction that will provide four new classrooms and two flexible learning spaces for our students. We anticipate this construction to be completed later in the fall with occupancy near the end of Semester 1.

For our 2022/2023 School Year, Dover Bay Secondary will have approximately 1540 students, which makes us the second largest secondary school in Nanaimo. Dover Bay is a grade eight to twelve school and has a large variety of course offerings to meet the needs of our students. As Nanaimo's north end continues to be a popular place for people to live, our school is projected to continue growing for the foreseeable future. Dover Bay is a popular destination for international students. We have 130 international students attending Dover Bay this year.

Dover Bay is the only secondary school in our district located on Snaw-Naw-As territory. Our relationship with the Snaw-Naw-As Nation is very important to us and we are working to strengthen our relationship to truly honour their territory. Truth and Reconciliation is one of our school goals and our school has made a commitment to continue to move this important work forward. To support this work and our indigenous students we have a strong cultural support team in place. This involves a full time Aboriginal Education Teacher, an Indigenous Cultural Support Worker, and a Snaw-Naw-As Cultural Advisor.



Territorial Acknowledgement

- Dover Bay is Located on the Traditional territory of the Sna-Naw-As People
- *We are thankful for the privilege to live, learn, work and play on this beautiful territory.*

DOVER BAY VISION AND VALUES

*Our Vision and Values were developed with input from staff, students, and families in the Fall of 2020. This was not the ideal time to re-envision the school as our world was spiraling into a global pandemic. This vision statement was important for our community as we tried to stay kind, connected and resilient through a tough stretch of history.

VISION

**Education that
inspires our community to be
KIND, CONNECTED and RESILIENT
for a changing world.**

VALUES

- Lifelong Learning
- Critical and Creative Thinking
- Diversity
- Cooperation
- Empathy
- Perseverance
- Responsibility

DOVER BAY ACADEMIC AND ELECTIVE COURSE OFFERINGS

The size of our school allows us to offer a wide variety of course offerings, meeting the needs of our diverse student body. These course offerings include a full slate of academic courses including upper-level Science, Math, Social Studies and English courses. Our teachers work to support our students and offer them engaging learning opportunities to help them achieve success.

We also offer a wide array of popular elective courses including but not limited to: Robotics, Dance, Auto-Tech, Metalwork, Physical Health and Education, Outdoor Education, Culinary Arts, Woodshop,

Musical Theatre, Fine Arts and Textiles. Students often find their passion with the electives and Dover Bay is fortunate to have such a fine array of elective teachers.

In-class instruction is also supplemented by many students with Island Connect Ed (ICE) course offerings. This is a flexible option which allows our students to work remotely on their online course either from home or from our Island Connect Ed Lab on our second floor.

In the Spring of 2022, our BC Ministry of Education announced a new Indigenous studies graduation requirement for all 2023/2024 graduates. Our NLPS School District moved quickly to ensure our graduates met this requirement by having all Grade 10 students this year take an English First Peoples course. Dover Bay has enrolled all grade ten students in EFP and is also offering two new courses this year: English 12 First Peoples and Contemporary Indigenous Studies 12.

STUDENT ACTIVITIES

Our school is a great place for students who choose to connect with the wider community surrounding them. We offer a wide variety of clubs, teams, and committees to keep everyone busy throughout the school year.

| | | |
|---|--|---|
| <p><u>ATHLETICS @ Dover</u></p> <p>FALL SPORTS Volleyball Cross Country Boys Soccer Swimming Field Hockey</p> <p>WINTER SPORTS Basketball Gymnastics (club) Wrestling (club)</p> <p>SPRING SPORTS Golf Girls Soccer Track & Field Badminton Rugby (Boys and Girls) Ultimate Frisbee</p> |  <p>Visit the Athletics webpage at www.doverbay.ca and follow on @doverbayathletics on instagram to find all information regarding tryouts, seasons of play, and contact information for everything sports!!</p> <p>#doverpride</p> | <p><u>CLUBS @ Dover</u></p> <p>Students' Council Social Equity Club Eco Club Knitting Club Model United Nations Weight room After School Aboriginal Crafts Club Math Contest Club Rainbow Alliance Homework Club Intramurals Chess Club Robotics Club Cultural Heritage Society Journalism Club Dungeons & Dragons Club</p> <p>New ones being suggested each year!</p> |
|---|--|---|

DOVER BAY FACILITY

Although our school facility is 30 years old, it is still a great place to learn, and it has a variety of recent and ongoing improvements. Over the course of the summer our weight room went through an extensive renovation replacing all our original equipment with new equipment. This would not have been possible without the generous donations from our Dover community. Our school district also replaced our broken gymnasium divider wall with a new curtain in the late Spring.

The renovation/addition referenced in our introduction is the biggest improvement to Dover Bay since the doors opened in 1992. The construction is happening in two zones within the school. Zone A is Lower-D Wing where we have two new classrooms being built as well as a flexible learning space. This is all happening in what was formerly known as D-Wing storage. Zone B is in Lower-E Wing where two new classrooms are being built and a physical health and education space. This area was formerly referred to as the grade eight locker bay. Both of these areas will have a very contemporary design and will add a welcome update for our students and staff to enjoy.

Upcoming: we expect our new digital school sign to be installed and our student parking lot to receive improvements this fall.



Construction Update. Completion Expected in Late November, 2022

- **Zone A (D Wing)**
 - 2 New General Instruction Classrooms
 - 1 Flex Learning Space (3 Different Rooms)
- **Zone B (E Wing)**
 - 2 New General Instruction Classrooms
 - 1 New Physical Health Education Space
 - 1 New Gender-Neutral Washroom (replaces two older washrooms)

DOVER BAY SECONDARY SCHOOL GOALS

Our teaching staff has worked hard to implement our school goals. In the spring semester of 2022, we had a team of teachers revise our Continuous Improvement of Instruction and Assessment goal. This goal has had a number of changes to bring it into alignment with provincial mandates and school district planning.

Dover Bay will strive to reach the following goals:

Continuous Improvement of Instruction & Assessment

- Connect curricular and core competencies and indigenous ways of knowing to develop critical and creative thinkers with practical and transferable skills
- Inspire curiosity and passion through inquiry and differentiated instructional strategies to engage students who will make a positive impact
- Integrate responsive and reflective assessment practices including Universal Design for Learning principles
- Foster student success by creating a collaborative and inclusive culture for staff and students.

Inclusive Learning and Work Environment

- Dover Bay will provide an inclusive education that will effectively meet diverse learning needs in a way that is responsive, accepting, respectful and supportive.
- Through education, we want all students and staff to feel safe attending Dover Bay and be free from verbal or physical aggressions against their race, gender identification, sexual orientation, appearance, or ability at school and in the digital world.

- Dover Bay will establish an anti-racist, pro-diversity culture at Dover Bay in order to provide an anti-racist education that equips every child with the knowledge, skills and passion to create a more equitable and just world.
- Teachers, administrators and students will continue to seek input for opportunities that celebrate the diversity within the school to ensure all students and staff see that they are part of the Dover community.

Environmental Stewardship & Sustainability

- Support Dover Bay Eco-Club and other staff and student initiatives
- Reduce our carbon footprint by reducing, re-using, recycling
- Encourage digital applications over the use of paper
- Educate staff, students, and the parent/guardian community on environmental initiatives

Truth and Reconciliation

- Thu'it tunu sqwals tu Snaw'naw'as 'i' Dover Bay Secondary School ewthw: (True to the words of the Snaw'naw'as and Dover Bay School)
- Dover Bay Secondary School will become a leader in honouring the truth of Canada's past and present while actively creating opportunities for real and meaningful reconciliation.

| | |
|--|--|
| Building relationships between students, educators, families and the Snaw'naw'as traditional territory. | Foster greater awareness and appreciation of Coast Salish, First Nations, Métis and Inuit art, stories, spirituality, traditions and connection to the land. |
| Inviting elders, knowledge keepers, and indigenous voices into our learning spaces to enrich our hearts and minds. | Including the use of traditional Hul'qumi'num language through active lessons with students and educators. |

This is Dover Bay's commitment to Truth and Reconciliation.

**Created with feedback from Dover Bay: Teaching Staff, Support Staff, and Learning Leaders in February 2020, with revisions in May of 2021, and April of 2022.*

Thank -You / Hay ch q' a,

Geoff Steel (He, Him, His)

Principal

Dover Bay Secondary School

Nanaimo, British Columbia, V9V 1M1

IN THE BEGINNING...

Dover Bay

1992

Dover Bay Secondary School
6135 McGirr Road
Nanaimo, British Columbia
V9V 1M1

