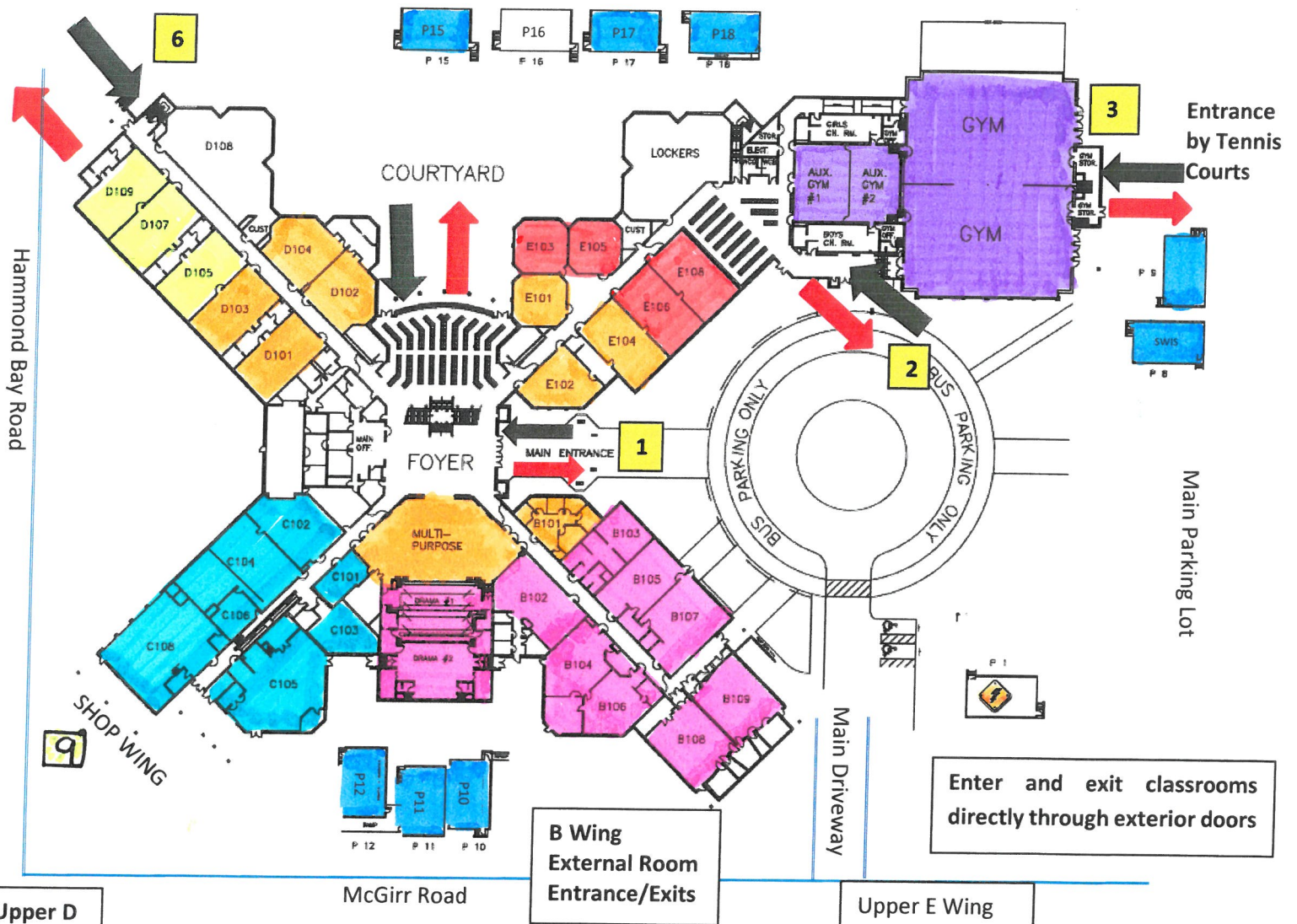
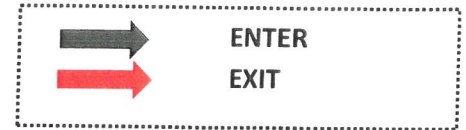


DOVER BAY SECONDARY SCHOOL MAP

MAIN FLOOR AND PORTABLES:



SECOND FLOOR:

Entrances/Exits

- 1 - Main Entrance (Foyer)
- 2 - Gym Entrance (Usual)
- 3 - Gym Ent by Tennis Courts
- 4 - Upper E Wing
- 5 - Upper D Wing
- 6 - Lower D Wing
- 7 - Direct Classroom Entry Outer Doors - B Wing
- 8 - Portables - Direct Entry
- 9 - C Wing

Enter/Exit Via Exterior Doors

Dover Bay Secondary
Entry and Exit Locations for Each Classroom



See the table below for which door you will use to enter and exit your classes:

Entry/Exit Point	Classrooms
1	Counselling Centre Library D101, D102, D103, D104, D201, D202, D203, D204, D205, D206, D207, D209 E101, E102, E104, E202, E203, E204, E205, E206 MPR
2	E103, E105, E106, E108
3	All PHE Classes (back gym doors near tennis courts)
4	E207, E208, E209, E210, E211, E212
5	D208, D210, D211, D212, D213, D215
6	D105, D107, D109
7	Use Exterior Classroom Door for entering and exiting these classrooms B102 (Back door through fire lane) B103, B104, B105, B106, B107, B108, B109 A101, A103 (Stage) Back door behind Portables 10-12
8	Portables: P8, P9, P10, P11, P12, P15, P17, P18
9	C101, C102, C103, C104, C105, C106, C106A, C108

Key Points to remember when entering and exiting the building:

- Enter and Exit via designated door, and stay to the right in the hallway, single file, following signage on the floor
- Masks to be worn in common areas like hallways, washrooms, etc.
- Use hand sanitizer station upon entry and exit from the building
- Zones are marked off in the hallways by delineators.
- Do not cross over to other zones in the hallways

